

TK GUIDELINE

TK150 PROBE REPLACEMENT

MODELS: *TK150*

EQUIPMENT



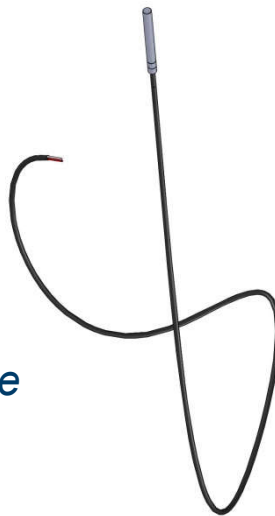
Screw-drivers



black clamps



*Thermostat Probe
(spare part)*



Tongs

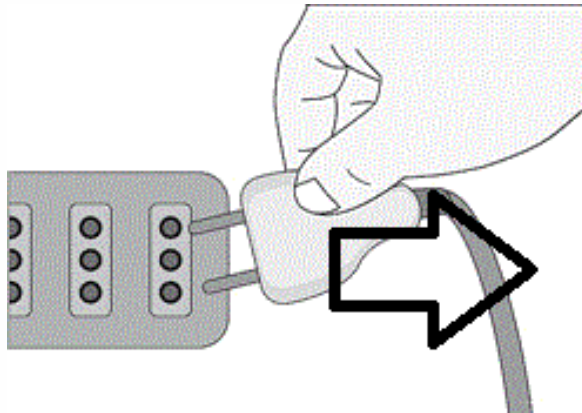


STEP n. 1

WARNING! Parts replacements and reparation may be carried out only by qualified persons. If this are not performed properly, they can cause electric shock, burns and fires



*Disconnect chiller from power supply.
Never touch internal part or dismount chiller when it is connected to power supply to avoid potential electric shock.*



STEP n. 2

Remove the ring nut from the water IN/OUT pipe

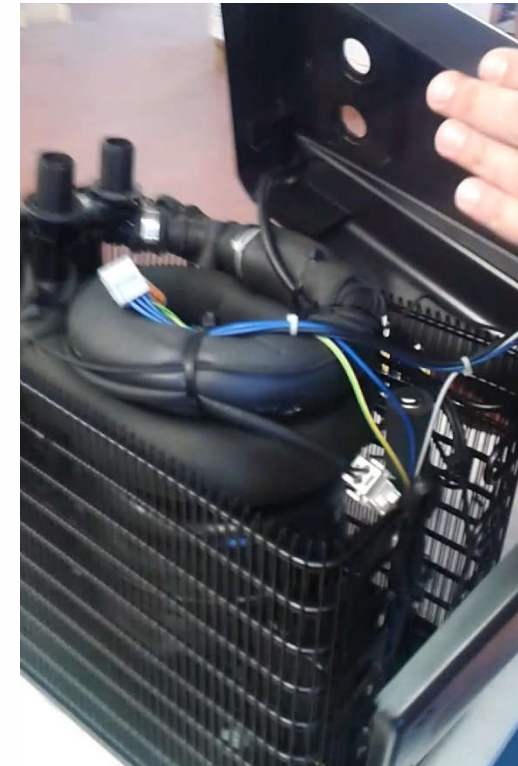


STEP n. 3

Using the screwdriver, remove the two screws from the back of the chiller and the two screws from the front



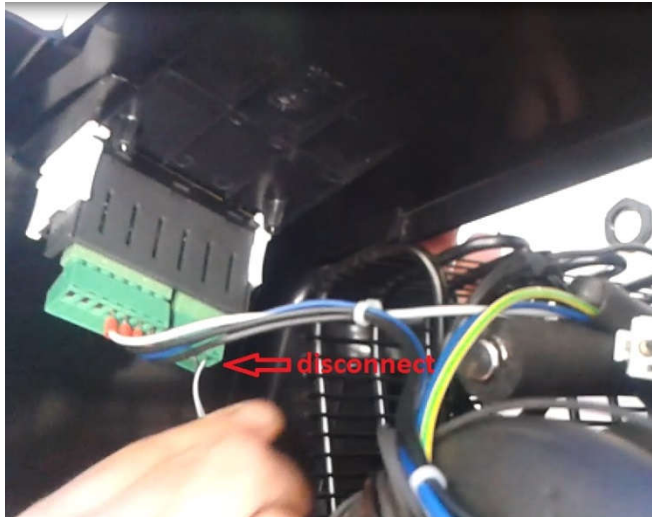
Remove the chiller cover



STEP n. 4

Disconnect the probe plug from the thermostat

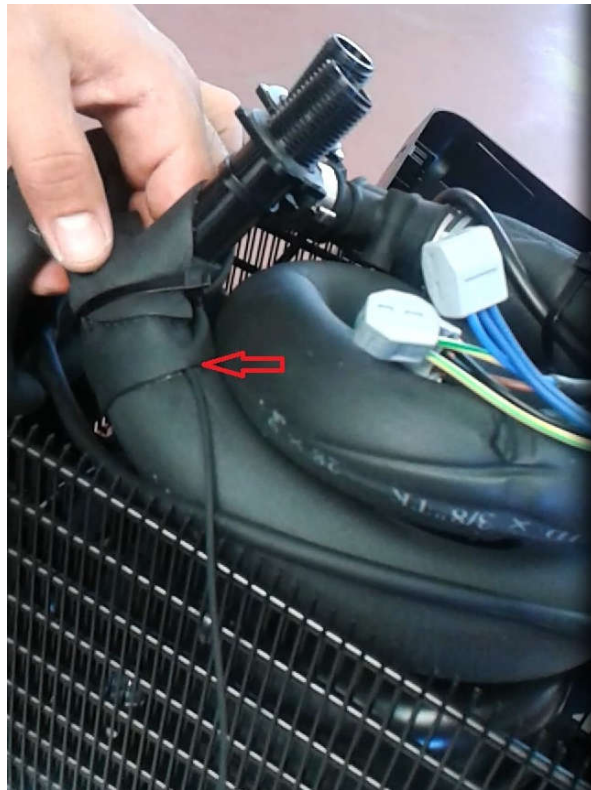
Then, with the small screwdriver, disconnect the green connector from the old probe wire and connect it to the new one.



STEP n. 5

Follow the probe wire. In order to remove the wire you have to cut the clamps and replace them later.

Remove the insulation in the indicated area (without breaking it too much)



STEP n. 6

Remove the white probe insulation

Replace the probe taking care that the probe touches the pipe



STEP n. 7

- *Replace the white insulation and the black insulated sheath*
- *Connect the probe plug to the thermostat and close the chiller*
- *Set "Ot" Parameter for probe Calibration*

STEP n. 8

Parameter	Description	Regulation range
Hy	This parameter sets the hysteresis, that is the differential of the unit.	0,5 ÷ 10°C 1 ÷ 45°F
Ot	This parameter adjusts the probe calibration: it allows to compensate for the difference in the temperature reading on the display compared to the actual water temperature.	-12 ÷ 12°C -20 ÷ 20°F
o1	Activation / deactivation of the heating function: - Set "On" to activate the heating function - Set "OFF" to deactivate the heating function.	On - OFF

5.4 HOW TO CHANGE A PARAMETER VALUE

To change any parameter's value, operate as follows:

1. Enter the Programming mode by pressing the **SET+▽** keys for 3 sec ("°C" or "°F" LED starts blinking).
2. Select the required parameter. Press the "**SET**" key to display its value
3. Use **△** or **▽** to change its value.
4. Press "**SET**" to store the new value and move to the following parameter.

To exit: Press **SET+△** or wait for 15 sec without pressing a key.

NOTE: the set value is stored even when the procedure is exited by waiting the time-out to expire.