

TK GUIDES

***FAN BLADE
REPLACEMENT***

MODELS :

TK3000 - TK3000H

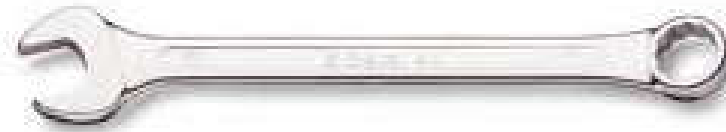
TK6000 - TK6000H

TK9000 - TK9000H

EQUIPMENT



Screw-drivers



Key for nut (10)



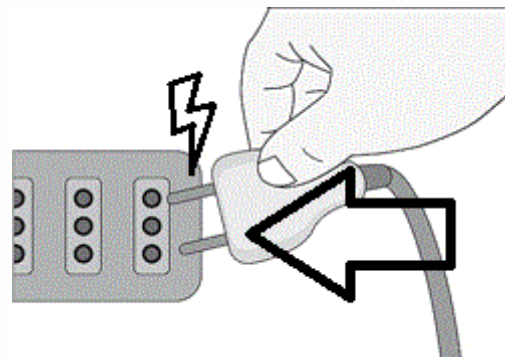
*Fan Blade
(spare part)*

WARNING

WARNING! Parts replacement and reparation may be carried out only by qualified persons. If this are not performed properly, they can cause electric shock, burns and fires

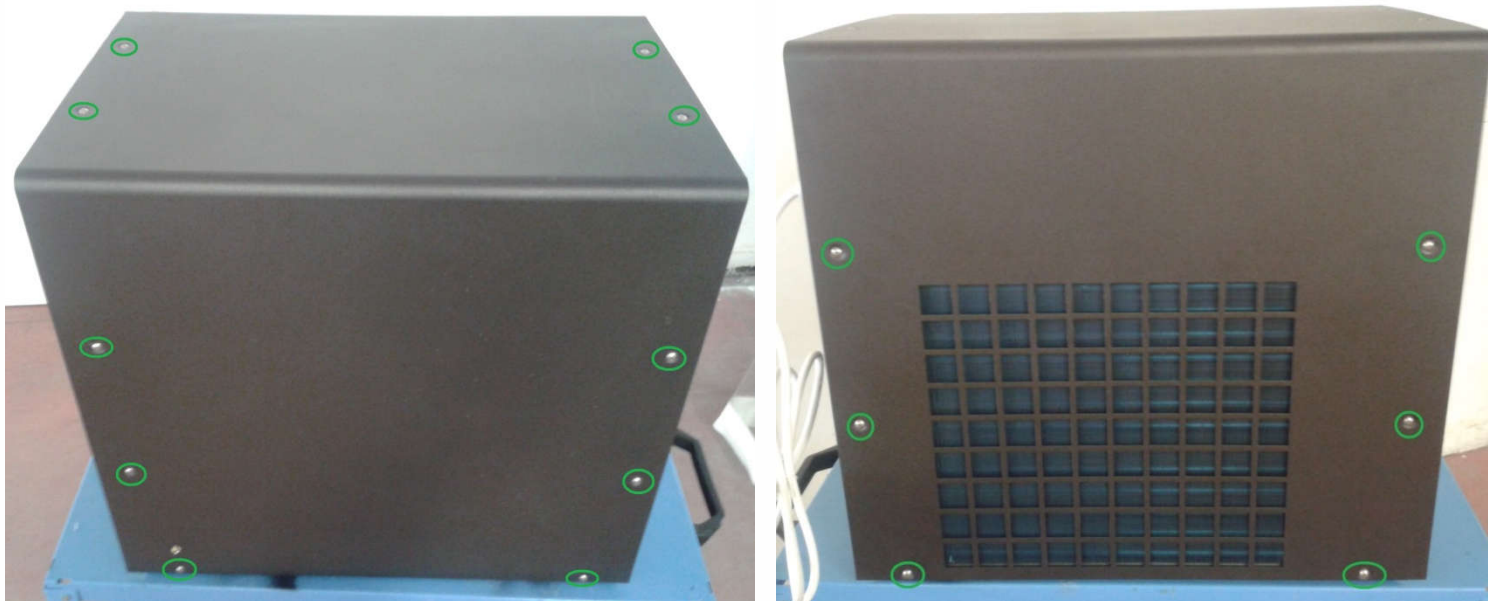
WARNING! TECO S.r.l. decline any responsibility in case of damages caused by a wrong installation

Disconnect the chiller from power supply. Never touch internal part or dismount chiller when it is connected to power supply to avoid potential electric shock.



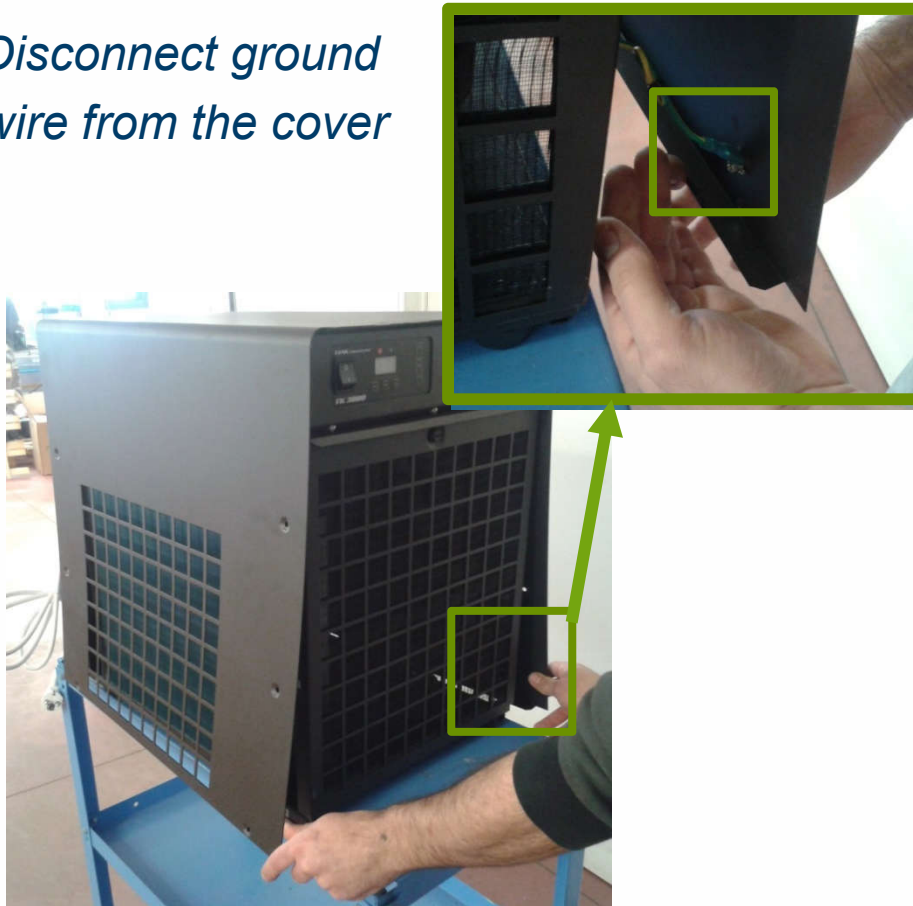
STEP n. 1

- *Using the screw-driver, remove the screws indicated in the picture here below (n°16 screws)*



STEP n. 2

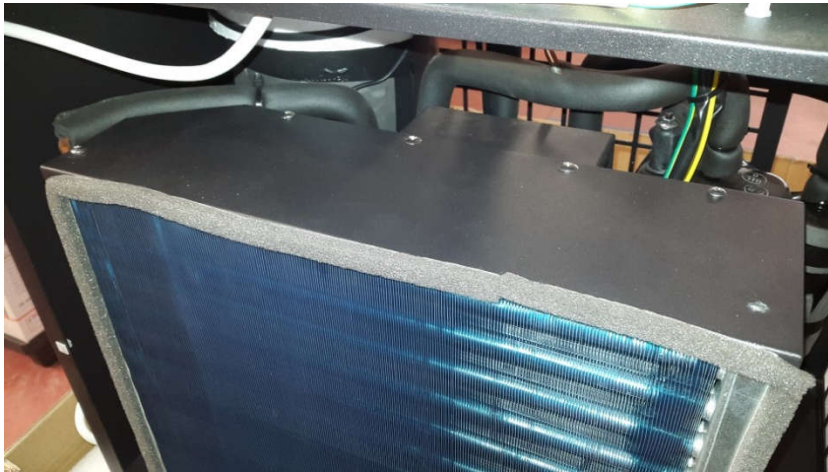
Disconnect ground wire from the cover



Remove the cover



STEP n. 3



Remove the conveyor top cover: take out the 6 screws (shown in the picture) using the small screw-driver



STEP n. 4



Remove the 2 screws mounted alongside the condenser, using the screw-driver (as shown in the picture).

STEP n. 5



Move the condenser by pulling on the free side. Stop when you are sure you can turn the nut of the fan.



STEP n. 6



Replace the broken fan blade with a new one: take out the nut using the key.

Please be careful when doing this operation: the fan blade material is not too strong and the new component can break.

Re-assemble the condenser (2 screws on one side) and the conveyor (6 screws on the top part) as before.

Then, put the cover on the chiller and assemble each screw.