

# ***TK GUIDELINE***

# ***OVERHEATING PROBE REPLACEMENT***

**MODELS :**

***TK3000 – TK6000 – TK 9000***

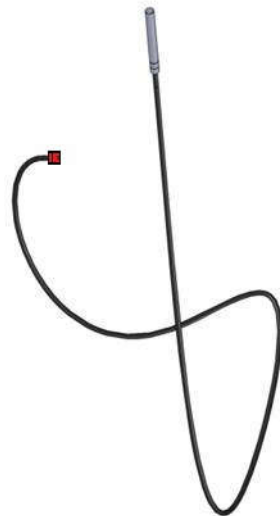
# EQUIPMENT



*Screw-drivers*



*7 black clamps*



*Probe  
with red connector  
(spare part)*



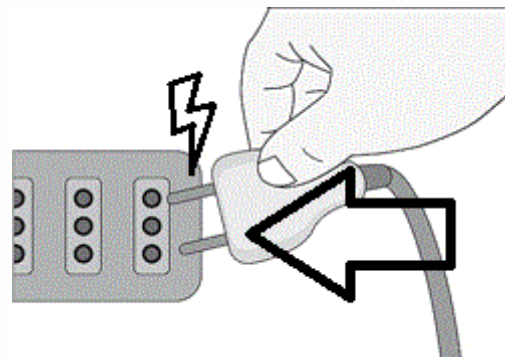
*Tongs*

# WARNING

**WARNING!** Parts replacement and reparation may be carried out only by qualified persons. If this are not performed properly, they can cause electric shock, burns and fires

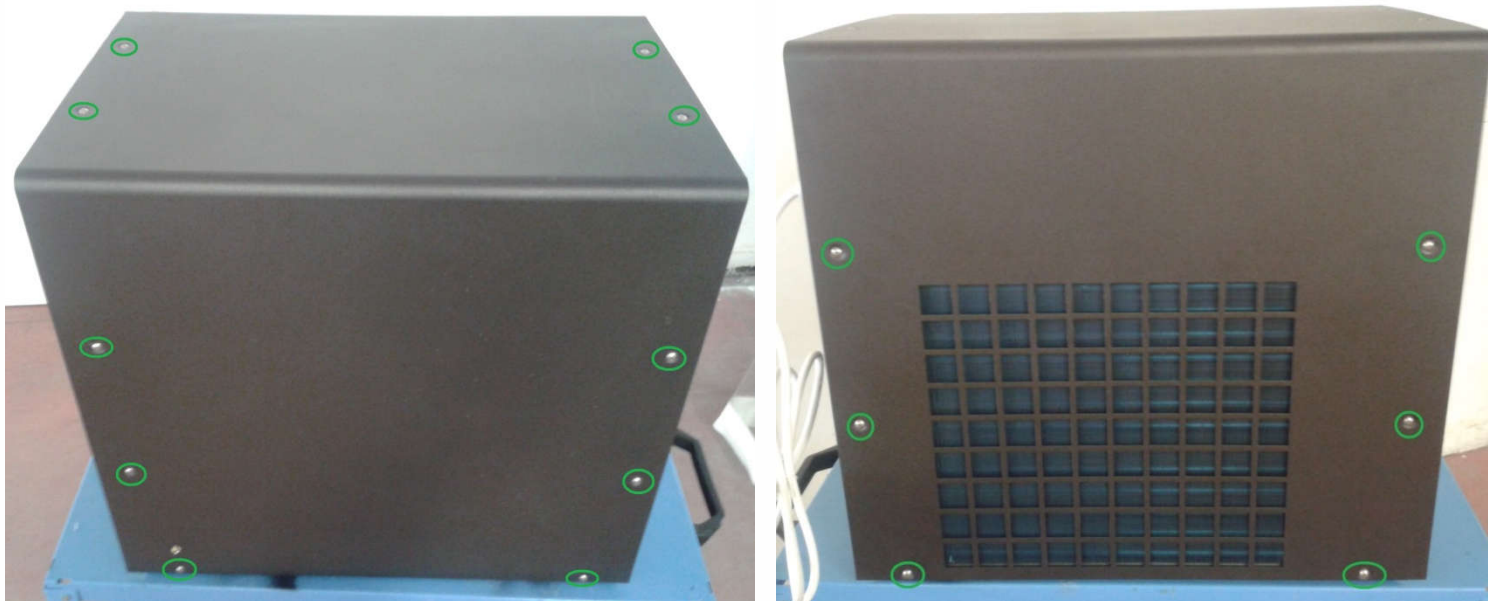
**WARNING!** TECO S.r.l. decline any responsibility in case of damages caused by a wrong installation

*Disconnect the chiller from power supply. Never touch internal part or dismount chiller when it is connected to power supply to avoid potential electric shock.*



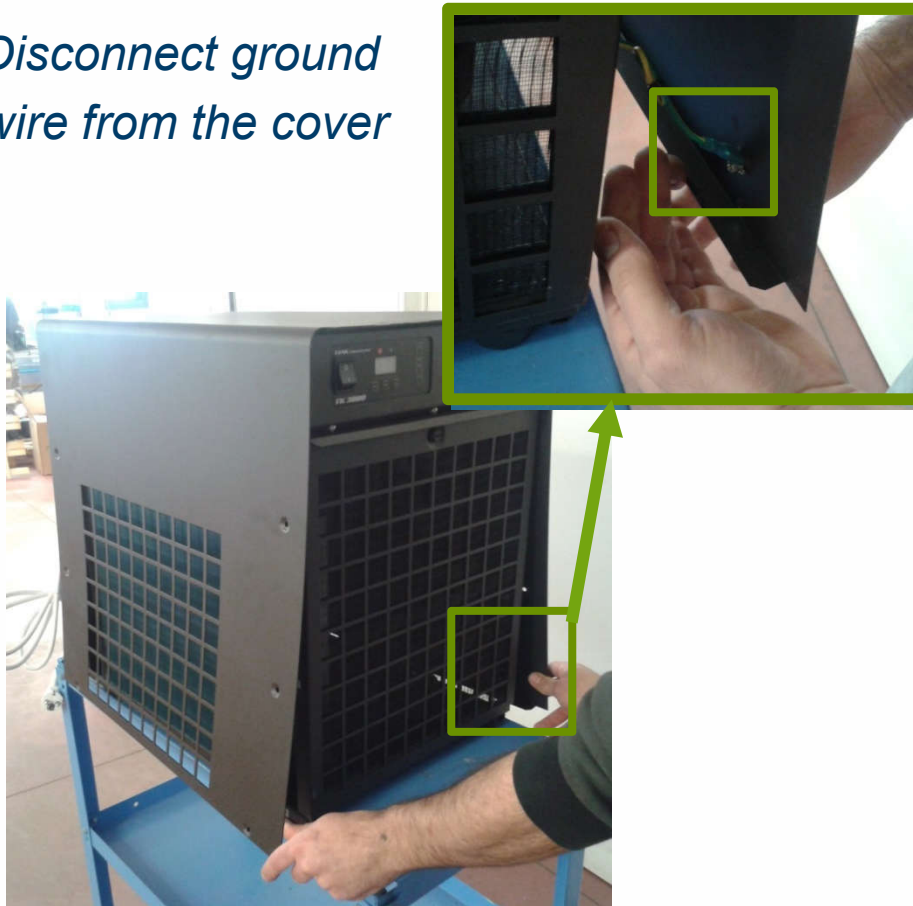
# STEP n. 1

- *Using the screw-driver, remove the screws indicated in the picture here below (n°16 screws)*



# STEP n. 2

*Disconnect ground wire from the cover*



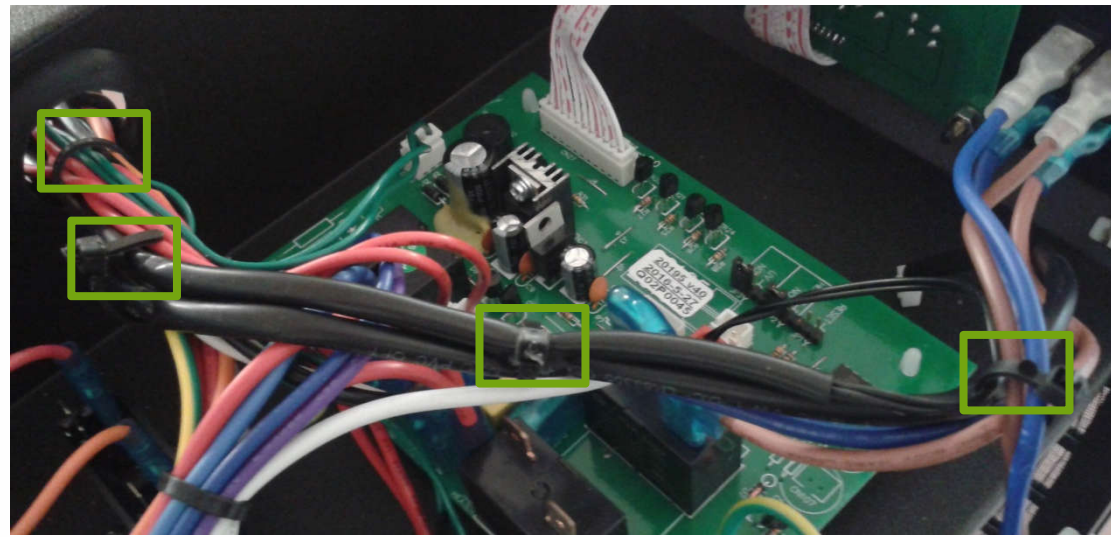
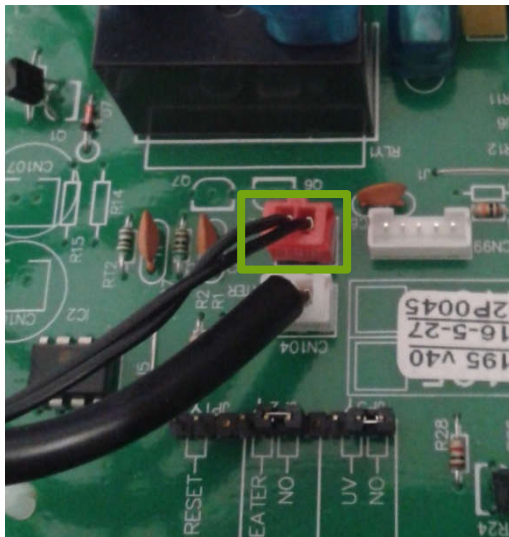
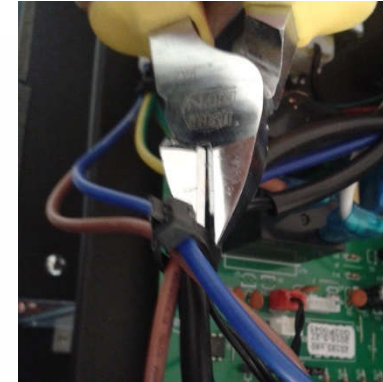
*Remove the cover*



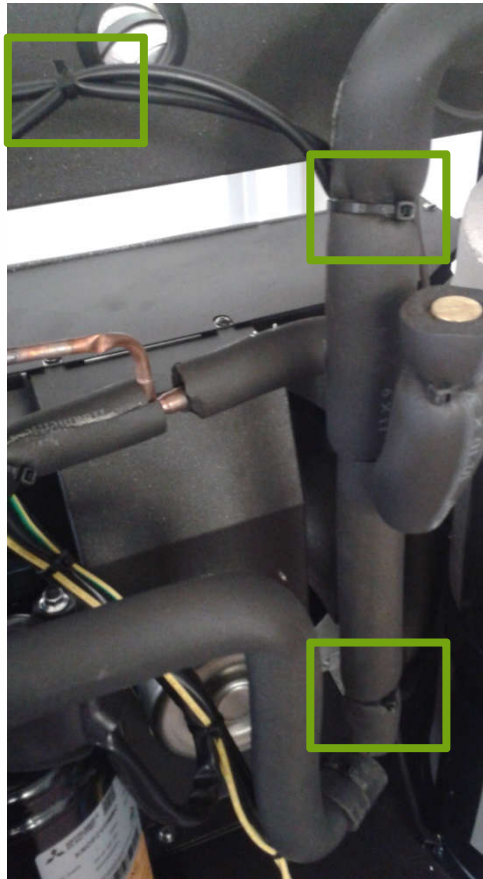
# STEP n. 3

*Disconnect the RED probe connector from main board.*

*Cut the black clamps inside the chiller that embrace the probe's wire.*



# STEP n. 4



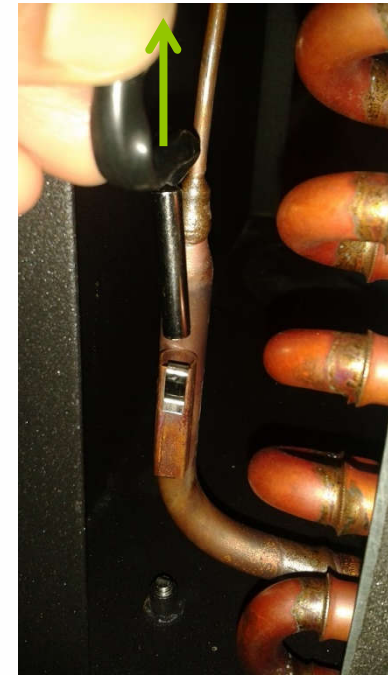
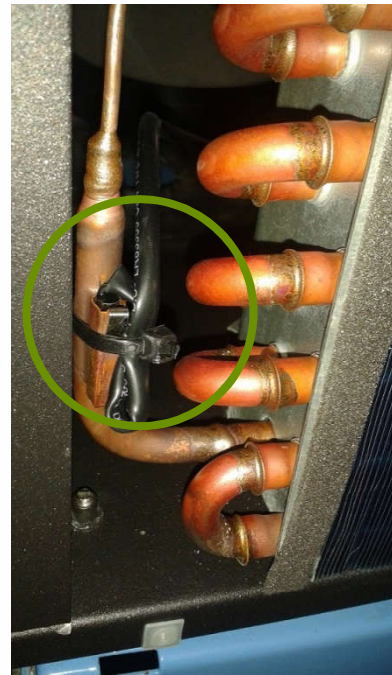
*Proceed to cut all black clamps that embrace the probe's wire.*

*Extract the wire from circular passage.*



# STEP n. 5

- *Cut the last black clamp that embrace the probe's wire and copper pipe near condenser*
- *Extract the probe and replace it*





# STEP n. 6

- *Insert probe cable in circular passage*
- *Connect new probe connector to main board*
- *Take new seven black plastic clamps and pinch the probe's cable with the other cables as it was at the beginning.*
- *Place the chiller cover in its position and then place the sixteen screws to close the chiller.*

*ATTENTION: remember to connect ground wire to the cover before closing the chiller.*

